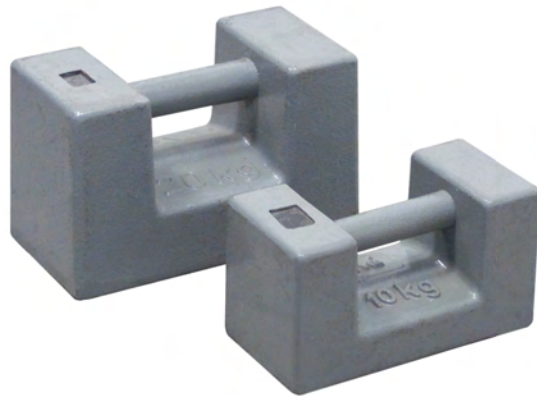




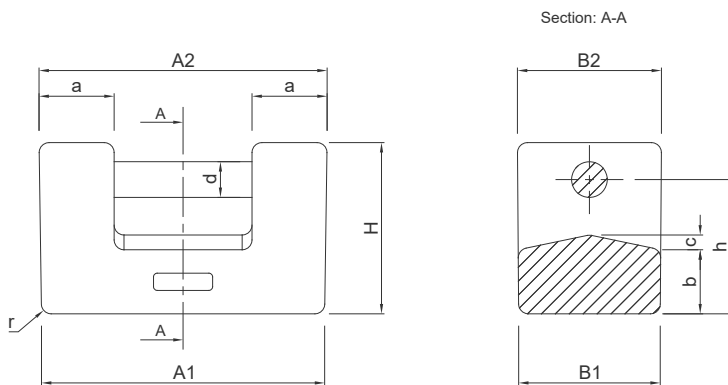
DESCRIPTION

- HT150 painted cast iron masses with handle.
- Composition (%):
 - C: 3.46 - 3.54
 - Si: 0.51 - 0.57
 - Mn: 2.12 - 2.49
- Tensile strength: 150 MPa.
- Structure: pearlitic cast iron (flake graphite+ferrite).
- M1 accuracy class according to OIML R111-1.
- Aluminum case with carrying handle (option on request).



NOMINAL VALUE	kg	TOLERANCE	DIMENSIONS	MASS CODE	CASE CODE
5		±250 mg (M1)	152 x 77 x 84 mm	PC5M1	BOXPC5M1
10		±500 mg (M1)	193 x 97 x 109 mm	PC10M1	BOXPC10M1
20		±1000 mg (M1)	234 x 117 x 139 mm	PC20M1	BOXPC20M1

DIMENSIONS



Nominal value	A1	A2	B1	B2	H	a	b	c	d	h	r
5 kg	150	152	75	77	84	36	30	6	19	66	5
10 kg	190	193	96	97	109	46	38	8	25	84	6
20 kg	230	234	115	117	139	61	52	12	29	109	8